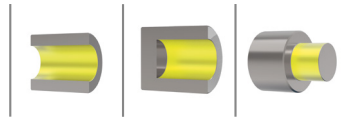




# REQUEST FORM MULTI-ROLLER BURNISHING TOOL



## Contact details

Company	E-mail
Contact	Phone

**For the application please always send us a workpiece drawing.**

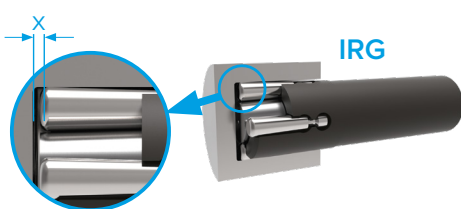
## Information on the material

Material	Strength (N/mm <sup>2</sup> )	Hardness (HRC)
----------	-------------------------------	----------------

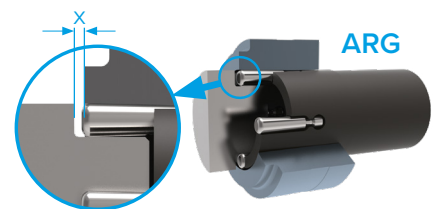
## Requirements

Which surface quality is to be achieved?	Rz	μm	Ra	μm	Other	μm
Which surface quality can be achieved in the preprocess?	Rz	μm	Ra	μm	Other	μm
∅ Internal (Through hole/Blind hole)				Burnishing depth		
∅ External				Tolerance level		
<b>Note: Please pay attention to the section „X“. This area cannot be roller burnished!</b>	Corner radius	Internal			External	
	Recess	Internal			External	

© BAUBLIES AG - 06/2023



Contact detail



Which pre-processing method is used before roller burnishing?

Reamer    Turning    Fine boring    Grinding    Other process

On which machine is the tool to be used?

Which toolshank/fixture is required?

Are there any other requirements for the tool? If yes, please fill out:

Length max.	Diameter max.	Weight to max.	Others
-------------	---------------	----------------	--------

Which coolant is used?    Oil    Emulsion    Others

Internal coolant required?    Yes    No

## Other comments